



SIZE CATALOGUE

Benefits of the BRST™ range

- designed to meet your needs

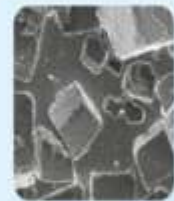
Microcell™ texture



10x Magnification



20x Magnification



30x Magnification

• DRIE™ barrier layer (incl. patch) *minimises silicone gel diffusion*¹

• High performance silicone elastomer layers *for enhanced shell integrity*

• 2 Gel options offer a choice to help achieve the desired outcome

• Microcell™ texture designed to reduce capsular contracture

• Optimal fill volume to reduce rippling

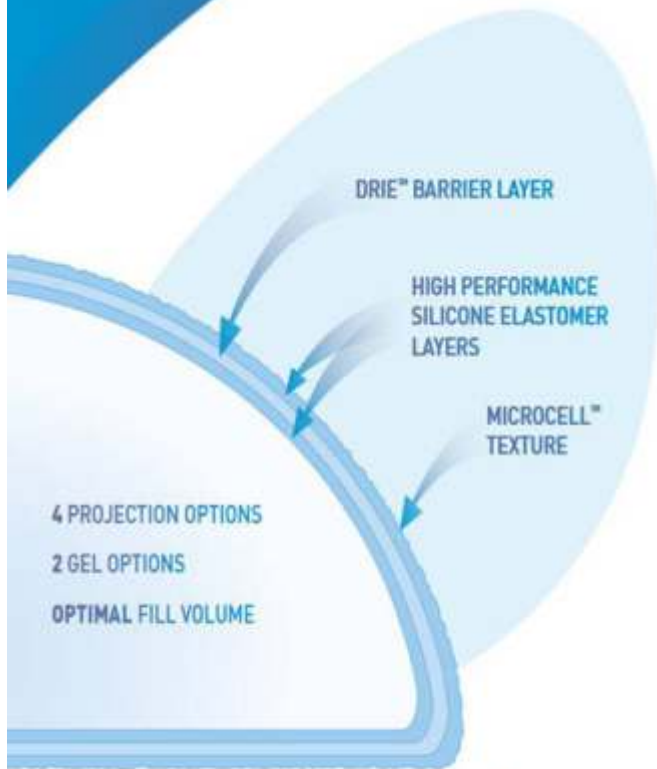


Reference: 1. Data on file.

The BRST™ range
- manufactured for quality

Extensive range of popular implant options

- New range of round textured implants to help achieve the desired result



70 SKUs in total across 4 projection options

	RESPONSIVE GEL	COHESIVE GEL
Low profile	 10 implant options	 10 implant options
Medium profile	 10 implant options	 10 implant options
High profile	 10 implant options	 10 implant options
Extra high profile		 10 implant options



Features

- Patient Lifetime product replacement
- Automatic enrolment
- Free size changes. At the request of your surgeon, any available size may be selected to replace your current BRST™ silicone gel-filled breast implant* at no cost to you
- 10 years free contra lateral breast implant replacement is conditional on the surgeon's specific recommendation

Exclusions and Limitations

The BRST™ warranty programme does not apply to the following:

- Dissatisfaction with implant size or aesthetics
- Adverse reactions other than implant rupture
- Removal of implants due to capsular contracture wrinkling or rippling
- Loss of product integrity caused by cosmetic revision surgery
- Loss of product integrity caused by open or closed capsulotomy
- Surgery on the opposite breast to replace an intact implant
- Gel deformation/gel fracture
- Other manufacturers products
- Financial reimbursement for a non-BRST™ replacement product in lieu of a BRST™ replacement product
- 'Broken Devices', products broken/ruptured at the time of implantation*
- This warranty programme is open to products purchased and implanted in the majority of countries in Europe, the Middle East and Africa**
- The programme will only be applied in the country in which the product was initially purchased and implanted
- Allergan reserves the right to terminate the BRST™ Warranty Programme

To submit a claim

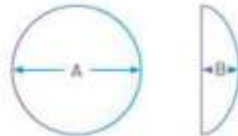
To be eligible for product replacement the surgeon is required to return the explanted BRST™ silicone gel-filled style breast implant(s) within two (2) months of the date of explantation

*'Broken Devices' are covered by Allergan's Standard Product Replacement Policy

**Please ask your surgeon for further information on cover

RLP/CLP

Low Profile



Responsive Gel (10 sizes)

Catalogue Number	Product Size (g)	Diameter A (cm)	Projection B (cm)
RLP-145	145	10.0	2.6
RLP-165	165	10.5	2.7
RLP-190	190	11.0	2.8
RLP-220	220	11.5	3.0
RLP-250	250	12.0	3.1
RLP-280	280	12.5	3.3
RLP-320	320	13.0	3.4
RLP-360	360	13.5	3.5
RLP-400	400	14.0	3.6
RLP-440	440	14.5	3.8

RMP/CMP

Moderate Profile



Responsive Gel (10 sizes)

Catalogue Number	Product Size (g)	Diameter A (cm)	Projection B (cm)
RMP-175	175	10.0	3.3
RMP-210	210	10.5	3.5
RMP-240	240	11.0	3.7
RMP-275	275	11.5	3.9
RMP-310	310	12.0	4.0
RMP-345	345	12.5	4.2
RMP-375	375	13.0	4.3
RMP-445	445	13.5	4.5
RMP-485	485	14.0	4.6
RMP-520	520	14.5	4.8

Cohesive Gel (10 sizes)

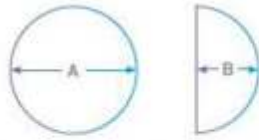
Catalogue Number	Product Size (g)	Diameter A (cm)	Projection B (cm)
CLP-145	145	10.0	2.6
CLP-165	165	10.5	2.7
CLP-190	190	11.0	2.8
CLP-220	220	11.5	3.0
CLP-250	250	12.0	3.1
CLP-280	280	12.5	3.3
CLP-320	320	13.0	3.4
CLP-360	360	13.5	3.5
CLP-400	400	14.0	3.6
CLP-440	440	14.5	3.8

Cohesive Gel (10 sizes)

Catalogue Number	Product Size (g)	Diameter A (cm)	Projection B (cm)
CMP-175	175	10.0	3.3
CMP-210	210	10.5	3.5
CMP-240	240	11.0	3.7
CMP-275	275	11.5	3.9
CMP-310	310	12.0	4.0
CMP-345	345	12.5	4.2
CMP-375	375	13.0	4.3
CMP-445	445	13.5	4.5
CMP-485	485	14.0	4.6
CMP-520	520	14.5	4.8

RHP/CHP

High Profile



Responsive Gel (10 sizes)

Catalogue Number	Product Size (g)	Diameter A (cm)	Projection B (cm)
RHP-220	220	10.0	4.2
RHP-240	240	10.5	4.3
RHP-265	265	11.0	4.5
RHP-325	325	11.5	4.7
RHP-345	345	12.0	4.9
RHP-385	385	12.5	5.1
RHP-450	450	13.0	5.3
RHP-520	520	13.5	5.5
RHP-560	560	14.0	5.7
RHP-605	605	14.5	5.8

Cohesive Gel (10 sizes)

Catalogue Number	Product Size (g)	Diameter A (cm)	Projection B (cm)
CHP-220	220	10.0	4.2
CHP-240	240	10.5	4.3
CHP-265	265	11.0	4.5
CHP-325	325	11.5	4.7
CHP-345	345	12.0	4.9
CHP-385	385	12.5	5.1
CHP-450	450	13.0	5.3
CHP-520	520	13.5	5.5
CHP-560	560	14.0	5.7
CHP-605	605	14.5	5.8

CXP

Xtra High Profile



Cohesive Gel (10 sizes)

Catalogue Number	Product Size (g)	Diameter A (cm)	Projection B (cm)
CXP-255	255	10.0	4.8
CXP-285	285	10.5	5.0
CXP-310	310	11.0	5.4
CXP-375	375	11.5	5.7
CXP-420	420	12.0	5.9
CXP-470	470	12.5	6.2
CXP-525	525	13.0	6.3
CXP-560	560	13.5	6.4
CXP-615	615	14.0	6.5
CXP-700	700	14.5	6.6

Quality for confidence

- Anatomical design provides a natural and proportionate breast shape^{2,3}
- Form Stable gel ensures predictable and long lasting shape with lower complication rates^{2,7}
- BIOCELL™ texture reduces rotation⁴ and contributes to lower capsular contracture rates⁵
- 360° INTRASHIEL™ barrier layer minimises silicone gel diffusion⁶
- Orientation marks provide assistance in visual and tactile positioning within the surgical pocket^{*}

Orientation marks

* From May 2010 a third orientation dot will be placed on the anterior face of all Natrelle™ 410 implants (beneath the lowest existing dot on the apex) to further assist in correct implant positioning.

(In order to make the introduction as smooth as possible you may receive deliveries containing one or both products)

Satisfaction the Natrelle™ way

Choice for individual solutions

	TruForm® and TruForm® (Soft Touch™) Cohesive			TruForm® (Cohesive)
	Low Projection	Moderate Projection	Full Projection	Extra Full Projection
Full Height	FL 5 sizes	FM 13 sizes	FF 13 sizes	FX 13 sizes
Moderate Height	ML 5 sizes	MM 10 sizes	MF 13 sizes	MX 14 sizes
Low Height	LL 5 sizes	LM 5 sizes	LF 13 sizes	LX 14 sizes

205
implant options

12 Anatomical shapes: 3 heights and 4 projection options

2 Gel options: **TruForm®** (Soft Touch™) and **TruForm®** (Cohesive)

- Gel-filled breast implant sizes for convenient intraoperative pocket size determination are available in the most widely used Natrelle™ 410 profiles and sizes (see page 31)

*Individual Women
 Individual Choices*

Natrella™ 410 - Low Projection

FL Full height/Low projection					
TruForm® (Cohesive)	TruForm® (Soft Touch™)	Size (g)	Width (cm)	Height (cm)	Projection (cm)
N27FL100-140	N-STFL100-140	140	10.0	10.5	2.9
N27FL110-190	N-STFL110-190	190	11.0	11.5	3.1
N27FL115-220	N-STFL115-220	220	11.5	12.0	3.2
N27FL120-250	N-STFL120-250	250	12.0	12.5	3.4
N27FL130-320	N-STFL130-320	320	13.0	13.5	3.8

ML Moderate height/Low projection					
TruForm® (Cohesive)	TruForm® (Soft Touch™)	Size (g)	Width (cm)	Height (cm)	Projection (cm)
N27ML100-125	N-STML100-125	125	10.0	9.1	2.9
N27ML110-170	N-STML110-170	170	11.0	10.1	3.1
N27ML115-195	N-STML115-195	195	11.5	10.6	3.2
N27ML120-220	N-STML120-220	220	12.0	11.1	3.4
N27ML130-285	N-STML130-285	285	13.0	12.1	3.8

LL Low height/Low projection					
TruForm® (Cohesive)	TruForm® (Soft Touch™)	Size (g)	Width (cm)	Height (cm)	Projection (cm)
N27LL105-135	N-SRL105-135	135	10.5	8.6	3.0
N27LL115-180	N-SRL115-180	180	11.5	9.6	3.2
N27LL120-210	N-SRL120-210	210	12.0	10.1	3.4
N27LL125-240	N-SRL125-240	240	12.5	10.5	3.6
N27LL135-300	N-SRL135-300	300	13.5	11.4	4.0

Natrella™ 410 - Moderate Projection

FM Full height/Moderate projection					
TruForm® (Cohesive)	TruForm® (Soft Touch™)	Size (g)	Width (cm)	Height (cm)	Projection (cm)
N27FM095-155	N-STFM095-155	155	9.5	10.0	3.4
② N27FM100-180	N-STFM100-180	180	10.0	10.5	3.6
③ N27FM105-205	N-STFM105-205	205	10.5	11.0	3.8
④ N27FM110-235	N-STFM110-235	235	11.0	11.5	4.0
⑤ N27FM115-270	N-STFM115-270	270	11.5	12.0	4.2
⑥ N27FM120-310	N-STFM120-310	310	12.0	12.5	4.4
⑦ N27FM125-350	N-STFM125-350	350	12.5	13.0	4.6
⑧ N27FM130-395	N-STFM130-395	395	13.0	13.5	4.8
N27FM135-440	N-STFM135-440	440	13.5	14.0	5.0
N27FM140-500	N-STFM140-500	500	14.0	14.5	5.2
N27FM145-550	N-STFM145-550	550	14.5	15.0	5.4
N27FM150-605	N-STFM150-605	605	15.0	15.5	5.5
N27FM155-670	N-STFM155-670	670	15.5	16.0	5.6

MM Moderate height/Moderate projection					
TruForm® (Cohesive)	TruForm® (Soft Touch™)	Size (g)	Width (cm)	Height (cm)	Projection (cm)
N27MM095-135	N-STMM095-135	135	9.5	8.6	3.4
N27MM100-160	N-STMM100-160	160	10.0	9.1	3.6
② N27MM105-185	N-STMM105-185	185	10.5	9.6	3.8
③ N27MM110-215	N-STMM110-215	215	11.0	10.1	4.0
④ N27MM115-245	N-STMM115-245	245	11.5	10.6	4.2
⑤ N27MM120-280	N-STMM120-280	280	12.0	11.1	4.4
⑥ N27MM125-320	N-STMM125-320	320	12.5	11.6	4.6
⑦ N27MM130-360	N-STMM130-360	360	13.0	12.1	4.8
⑧ N27MM135-400	N-STMM135-400	400	13.5	12.5	5.0
⑨ N27MM140-450	N-STMM140-450	450	14.0	12.9	5.2

LM Low height/Moderate projection					
TruForm® (Cohesive)	TruForm® (Soft Touch™)	Size (g)	Width (cm)	Height (cm)	Projection (cm)
N27LM100-140	N-STLM100-140	140	10.0	8.1	3.6
N27LM110-190	N-STLM110-190	190	11.0	9.1	4.0
N27LM115-220	N-STLM115-220	220	11.5	9.6	4.2
N27LM120-250	N-STLM120-250	250	12.0	10.1	4.4
N27LM130-320	N-STLM130-320	320	13.0	10.9	4.8

○ Gel-filled breast implant size available (see page 36)

For all product codes preceded by an "N" prefix, customers can continue to order without the new "N" prefix – however, Natrella™ packs will include the "N" prefix as will invoiced product codes.

For all product codes preceded by an "N" prefix, customers can continue to order without the new "N" prefix – however, Natrella™ packs will include the "N" prefix as will invoiced product codes.

Natrelle™ 410 – Full Projection

FF Full height/Full projection		Size (g)	Width (cm)	Height (cm)	Projection (cm)
TruForm® (Cohesive)	TruForm® (Soft Touch™)				
N27FF095-160	NSTFF095-160	160	9.5	10.0	3.7
N27FF100-185	NSTFF100-185	185	10.0	10.5	4.0
N27FF105-220	NSTFF105-220	220	10.5	11.0	4.2
N27FF110-255	NSTFF110-255	255	11.0	11.5	4.4
N27FF115-290	NSTFF115-290	290	11.5	12.0	4.6
N27FF120-335	NSTFF120-335	335	12.0	12.5	4.8
N27FF125-375	NSTFF125-375	375	12.5	13.0	5.1
N27FF130-425	NSTFF130-425	425	13.0	13.5	5.2
N27FF135-475	NSTFF135-475	475	13.5	14.0	5.3
N27FF140-535	NSTFF140-535	535	14.0	14.5	5.6
N27FF145-595	NSTFF145-595	595	14.5	15.0	5.8
N27FF150-655	NSTFF150-655	655	15.0	15.5	6.1
N27FF155-740	NSTFF155-740	740	15.5	16.0	6.2

MF Moderate height/Full projection		Size (g)	Width (cm)	Height (cm)	Projection (cm)
TruForm® (Cohesive)	TruForm® (Soft Touch™)				
N27MF095-140	NSTMF095-140	140	9.5	8.6	3.7
N27MF100-165	NSTMF100-165	165	10.0	9.1	4.0
N27MF105-195	NSTMF105-195	195	10.5	9.6	4.2
N27MF110-225	NSTMF110-225	225	11.0	10.1	4.4
N27MF115-255	NSTMF115-255	255	11.5	10.6	4.6
N27MF120-295	NSTMF120-295	295	12.0	11.1	4.8
N27MF125-335	NSTMF125-335	335	12.5	11.6	5.1
N27MF130-375	NSTMF130-375	375	13.0	12.1	5.2
N27MF135-420	NSTMF135-420	420	13.5	12.5	5.3
N27MF140-470	NSTMF140-470	470	14.0	12.9	5.6
N27MF145-525	NSTMF145-525	525	14.5	13.2	5.8
N27MF150-580	NSTMF150-580	580	15.0	13.6	6.1
N27MF155-640	NSTMF155-640	640	15.5	13.9	6.2

LF Low height/Full projection		Size (g)	Width (cm)	Height (cm)	Projection (cm)
TruForm® (Cohesive)	TruForm® (Soft Touch™)				
N27LF095-125	NSTLF095-125	125	9.5	7.6	3.7
N27LF100-150	NSTLF100-150	150	10.0	8.1	4.0
N27LF105-175	NSTLF105-175	175	10.5	8.6	4.2
N27LF110-205	NSTLF110-205	205	11.0	9.1	4.4
N27LF115-240	NSTLF115-240	240	11.5	9.6	4.6
N27LF120-270	NSTLF120-270	270	12.0	10.1	4.8
N27LF125-310	NSTLF125-310	310	12.5	10.5	5.1
N27LF130-350	NSTLF130-350	350	13.0	10.9	5.2
N27LF135-390	NSTLF135-390	390	13.5	11.4	5.3
N27LF140-440	NSTLF140-440	440	14.0	11.8	5.6
N27LF145-490	NSTLF145-490	490	14.5	12.2	5.8
N27LF150-540	NSTLF150-540	540	15.0	12.6	6.1
N27LF155-595	NSTLF155-595	595	15.5	13.0	6.2

For all product codes preceded by an "N" prefix, customers can continue to order without the new "N" prefix – however, Natrelle™ products will include the "N" prefix as well increased product codes.

Natrelle™ 410 – Extra Full Projection

FX Full height/eXtra-full projection		Size (g)	Width (cm)	Height (cm)	Projection (cm)
TruForm® (Cohesive)					
N27FX095-185		185	9.5	10.0	4.6
N27FX100-215		215	10.0	10.5	4.9
N27FX105-245		245	10.5	11.0	5.1
N27FX110-280		280	11.0	11.5	5.3
N27FX115-315		315	11.5	12.0	5.5
N27FX120-360		360	12.0	12.5	5.7
N27FX125-410		410	12.5	13.0	6.0
N27FX130-450		450	13.0	13.5	6.1
N27FX135-495		495	13.5	14.0	6.2
N27FX140-560		560	14.0	14.5	6.5
N27FX145-615		615	14.5	15.0	6.7
N27FX150-690		690	15.0	15.5	7.0
N27FX155-775		775	15.5	16.0	7.1

MX Moderate height/eXtra-full projection		Size (g)	Width (cm)	Height (cm)	Projection (cm)
TruForm® (Cohesive)					
N27MX095-165		165	9.5	8.6	4.6
N27MX100-195		195	10.0	9.1	4.9
N27MX105-225		225	10.5	9.6	5.1
N27MX110-255		255	11.0	10.1	5.3
N27MX115-290		290	11.5	10.6	5.5
N27MX120-325		325	12.0	11.1	5.7
N27MX125-370		370	12.5	11.6	6.0
N27MX130-410		410	13.0	12.1	6.1
N27MX135-445		445	13.5	12.5	6.2
N27MX140-520		520	14.0	12.9	6.5
N27MX145-550		550	14.5	13.2	6.7
N27MX150-620		620	15.0	13.6	7.0
N27MX155-685		685	15.5	13.9	7.1
N27MX160-765		765	16.0	14.3	7.2

LX Low height/eXtra-full projection		Size (g)	Width (cm)	Height (cm)	Projection (cm)
TruForm® (Cohesive)					
N27LX095-145		145	9.5	7.6	4.6
N27LX100-175		175	10.0	8.1	4.9
N27LX105-195		195	10.5	8.6	5.1
N27LX110-225		225	11.0	9.1	5.3
N27LX115-255		255	11.5	9.6	5.5
N27LX120-290		290	12.0	10.1	5.7
N27LX125-330		330	12.5	10.5	6.0
N27LX130-365		365	13.0	10.9	6.1
N27LX135-405		405	13.5	11.4	6.2
N27LX140-455		455	14.0	11.8	6.5
N27LX145-515		515	14.5	12.2	6.7
N27LX150-570		570	15.0	12.6	7.0
N27LX155-625		625	15.5	13.0	7.1
N27LX160-685		685	16.0	13.4	7.2

○ Gel-filled breast implant size available (see pages 37 and 38)